



INSTRUCTIONS FOR:

4154-TC – Liberty Surround

Tools required:

1. Hand Saw (if sizing is required)
2. Level
3. Screwdriver/drill
4. (8) 8-12 x 1” screws with matching anchors
5. 3/16” Drill bit
6. Caulking gun
7. 1 tube of Premium polyurethane construction adhesive

READ INSTRUCTIONS THOROUGHLY PRIOR TO ATTEMPTING INSTALLATION. DRY FIT RECOMMENDED PRIOR TO APPLYING ADHESIVE.

- (a) Place left Liberty corner piece to left corner of firebox and measure the required height “A” (Fig. 1-1).
Note: all panels can be used as either leg or header.
- (b) Pre-drill & countersink at predetermined screw location on tabs of corners (Fig. 1-2). Apply generous/continuous bead of construction adhesive to back of the corners, position back to set location and screw tight to wall (Fig. 1-3).
- (c) Mark and cut Liberty leg to measurement ‘A’. Slide left leg into place.
- (d) Repeat steps (a) to (c) for the right Liberty leg & corner piece.
- (e) Measure required header width ‘B’ (Fig. 1.4). Mark & cut Liberty header to this measurement. Apply adhesive to the face of wall where back of the header will contact and also tabs on the corners.

Our mantels are designed to adjust to large variety of fireplace sizes by sliding the components over the surround material. However it is possible to cut the leg base to allow further height adjustment. If filling is required due to uneven walls, we recommend DAP “ALEX PLUS” (ALMOND) as an appropriate colored caulk.

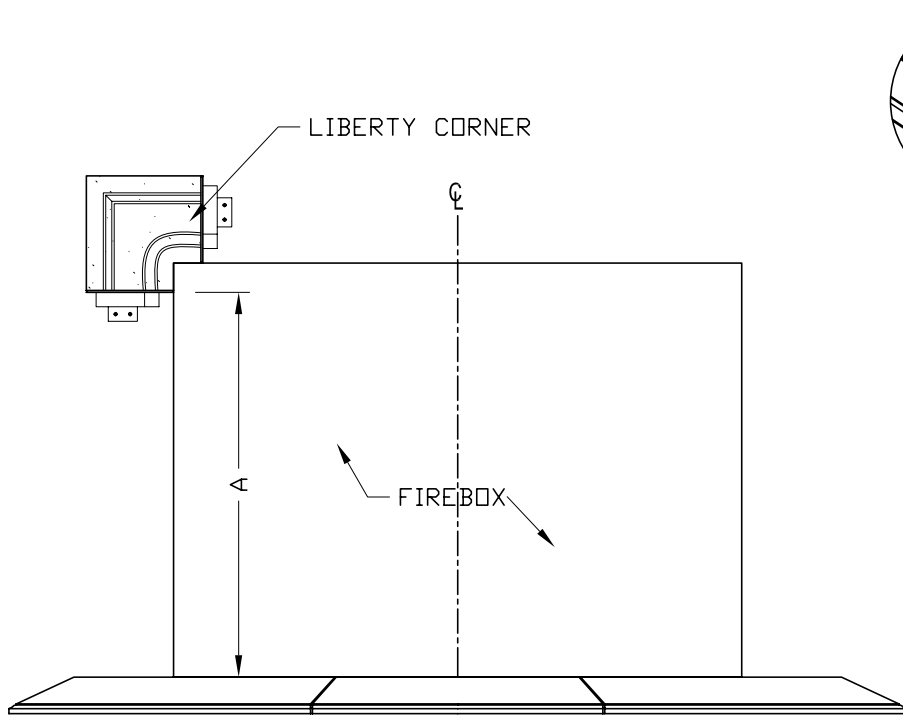


Fig. 1-1

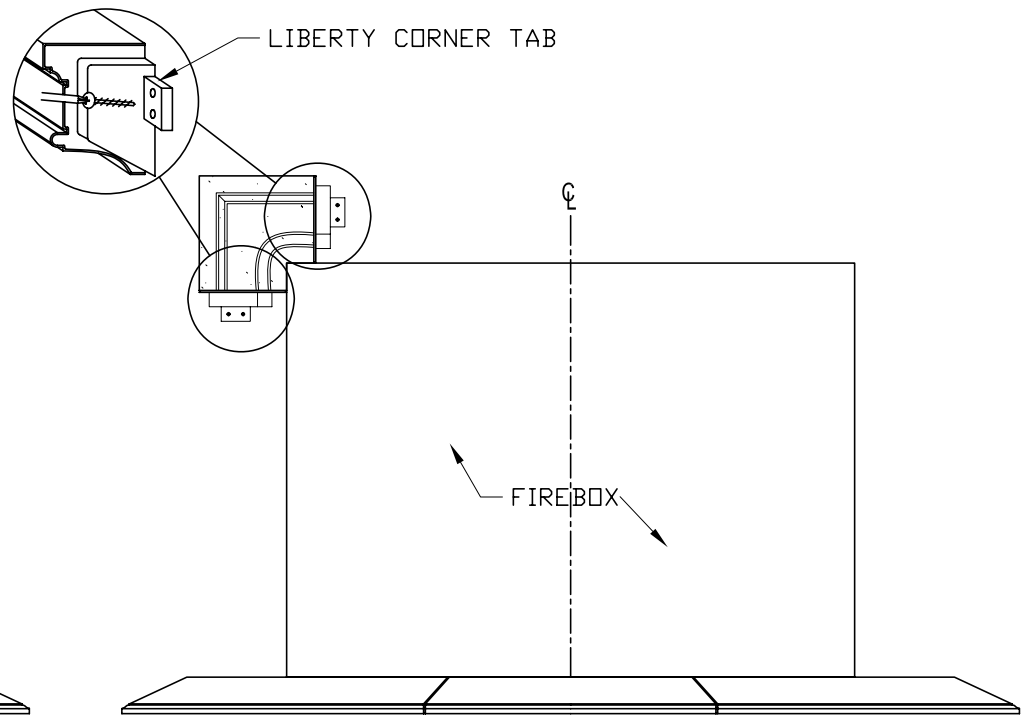


Fig. 1-2

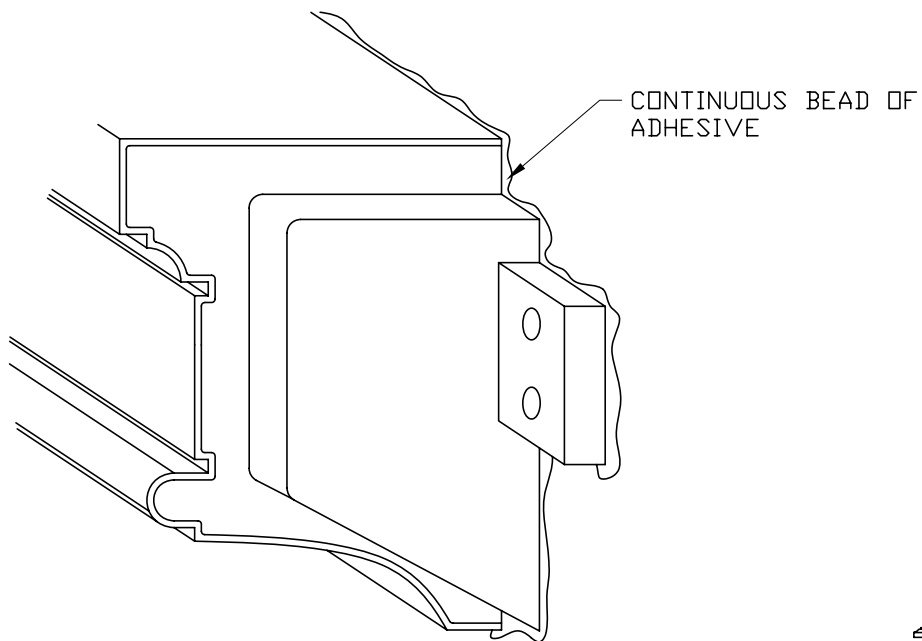


Fig. 1-3

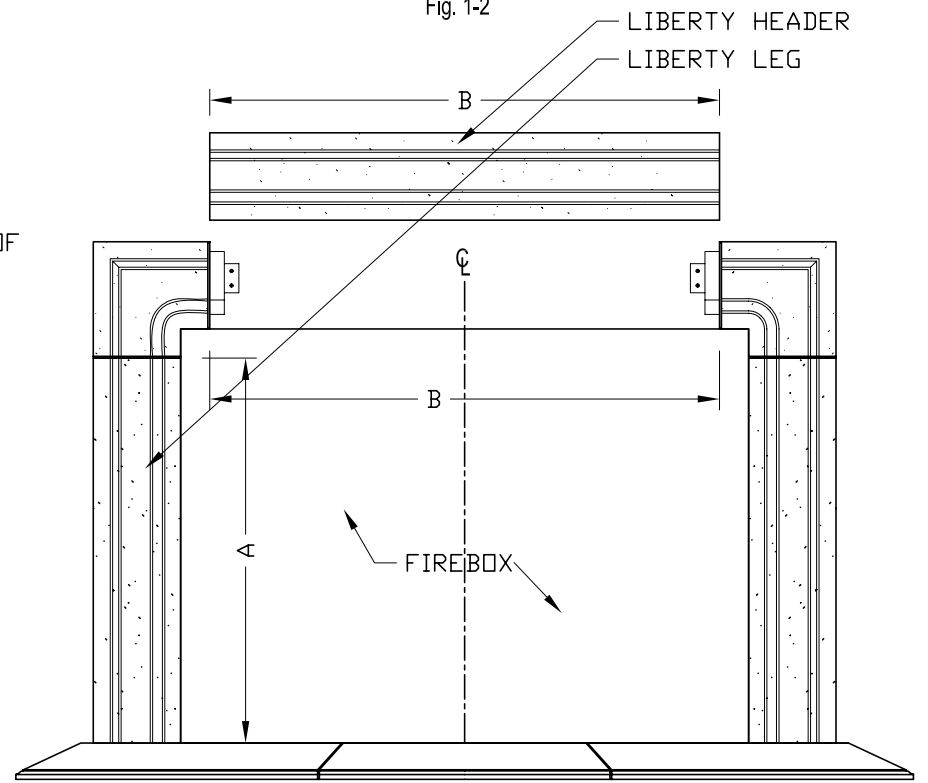


Fig. 1-4